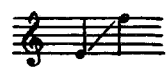


# ПОВЯНЬ, ПОВЯНЬ

Обработка Г. Киркора

(1910—1980)

Ноты с сайта - [www.notarhiv.ru](http://www.notarhiv.ru)



Lento

rit.

*p*

По-

нар

Musical score for the first system. It features a vocal line in treble clef and a piano accompaniment in grand staff (treble and bass clefs). The tempo is marked 'Lento' and 'rit.' (ritardando). The dynamics include 'p' (piano) and 'rit.'. The lyrics 'По-' are written below the vocal line.

Musical score for the second system. The vocal line continues with the lyrics '-вянь, по- вянь, бурь-по-го- душ- ка, во мой зе- лен'. The piano accompaniment includes dynamics 'mf' (mezzo-forte) and 'p' (piano).

Musical score for the third system. The vocal line continues with the lyrics 'сад. 1. Во мой зе- лен сад. В мо- ем са- (2) -на рас- тет, ка- ли- нуш-'. The piano accompaniment includes dynamics 'p' (piano), 'mf' (mezzo-forte), and 'f' (forte), as well as the instruction 'cresc.' (crescendo).

*poco rit.*

-ду, да во са- ди- ке ка- ли- на рас-  
-ка да с ма- ли- нуш- кой, ла- зо- ре- вый

**1.**  *poco più mosso*

-тет.

*rit*                       *a tempo*

**2.**

2. Ка- ли- // цвет.